

Stroke care services

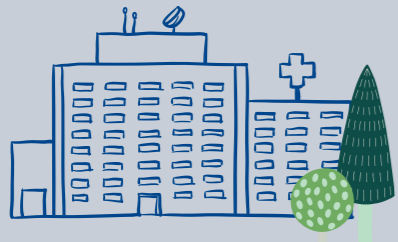
Option 1

Option 2

Option 3

Sunderland

Royal Hospital



Inpatient hyperacute and acute stroke care

Hospital-based rehabilitation on specialist stroke ward

Local Community Stroke Teams

Inpatient hyperacute and acute stroke care

Hospital-based rehabilitation on specialist stroke ward

After 7 days

South Tyneside patients can be moved to South Tyneside District Hospital

Local Community Stroke Teams

Inpatient hyperacute and acute stroke care

Hospital-based rehabilitation on specialist stroke ward

After 3 days

South Tyneside patients can be moved to South Tyneside District Hospital

Local Community Stroke Teams

South Tyneside

District Hospital



Local Community Stroke Teams

Hospital-based rehabilitation on specialist stroke ward

Local Community Stroke Teams

Acute stroke care

Hospital-based rehabilitation on specialist stroke ward

Local Community Stroke Teams

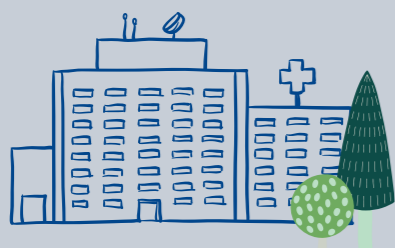
**Maternity (obstetrics) and women's healthcare (gynaecology) services**

**Option 1**

**Option 2**

**Sunderland**

Royal Hospital



Consultant-led maternity unit for high risk births

Alongside midwife-led care

Special care baby unit and neonatal intensive care

Antenatal/post-natal care, dating scans, pregnancy assessment unit, community midwifery

Gynaecology inpatient and day case surgery

Maternity and gynaecology outpatients clinics

Consultant-led maternity unit for high risk births

Alongside midwife-led care

Special care baby unit and neonatal intensive care

Antenatal/post-natal care, dating scans, pregnancy assessment unit, community midwifery

Gynaecology inpatient and day case surgery

Maternity and gynaecology outpatients clinics

**South Tyneside**

District Hospital



Free-standing midwife-led unit for low risk births

Birth choice of Newcastle or Gateshead

Antenatal/post-natal care, dating scans, pregnancy assessment unit, community midwifery

Gynaecology day case surgery

Maternity and gynaecology outpatients clinics

Antenatal/post-natal care, dating scans, pregnancy assessment unit, community midwifery

Gynaecology day case surgery

Maternity and gynaecology outpatients clinics

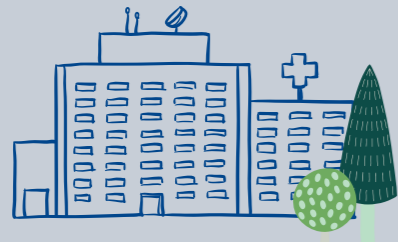
Children and young people's healthcare (urgent and emergency paediatrics) services

Option 1

Option 2

Sunderland

Royal Hospital



24/7 paediatric Emergency Department, including children's short stay assessment beds

24/7 paediatric Emergency Department, including children's short stay assessment beds

South Tyneside

District Hospital



12-hour paediatric Emergency Department (8am-8pm), including children's short stay assessment beds

Nurse-led paediatric minor injury or illness service (8am-8pm)